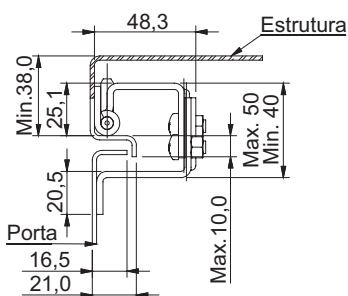
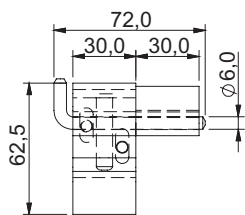
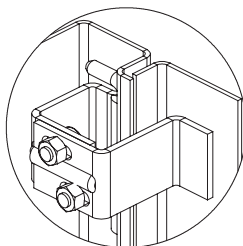


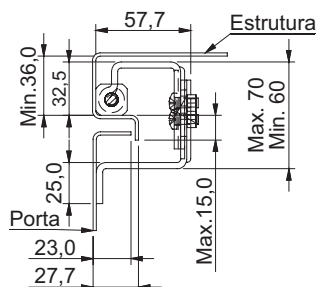
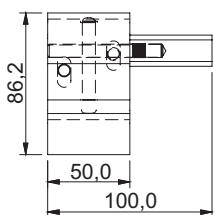
91035



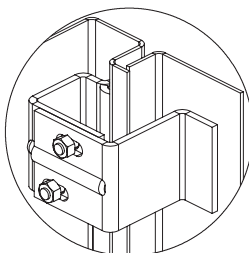
Aplicação



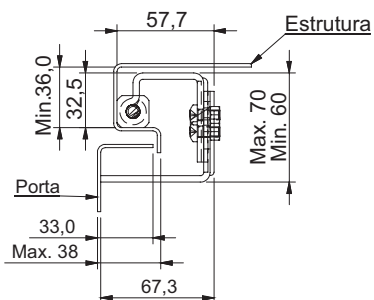
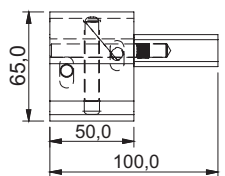
91025



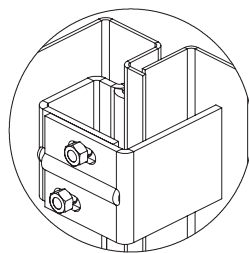
Aplicação



91015



Aplicação



DADOS TÉCNICOS

Fornecimento:

Corpo, eixo, e elementos de fixação confeccionados em aço carbono.

Acabamento:

Zincado trivalente branco.

Montagem:

Em porta embutida para gabinetes individuais ou acoplados. Porta extraível através da retirada do pino interno ou por sistema de encaixe. Fixação na estrutura e na porta através de solda. Permite regulagem horizontal.

Observação:

Direita/Esquerda, 90° para montagens individuais e acopladas.

ZINCADO TRIVALENTE

MEDIDA DA ABA DA PORTA

CÓDIGO

20 mm

91035

26 mm

91025

38 mm

91015